

# The Dutch dairy sector in a post quota era: trends and challenges

Imke J.M. de Boer

Professor of Animal Production Systems

*Annie de Veer, Business Manager WUR Livestock Research*



# Lay-out duo-presentation

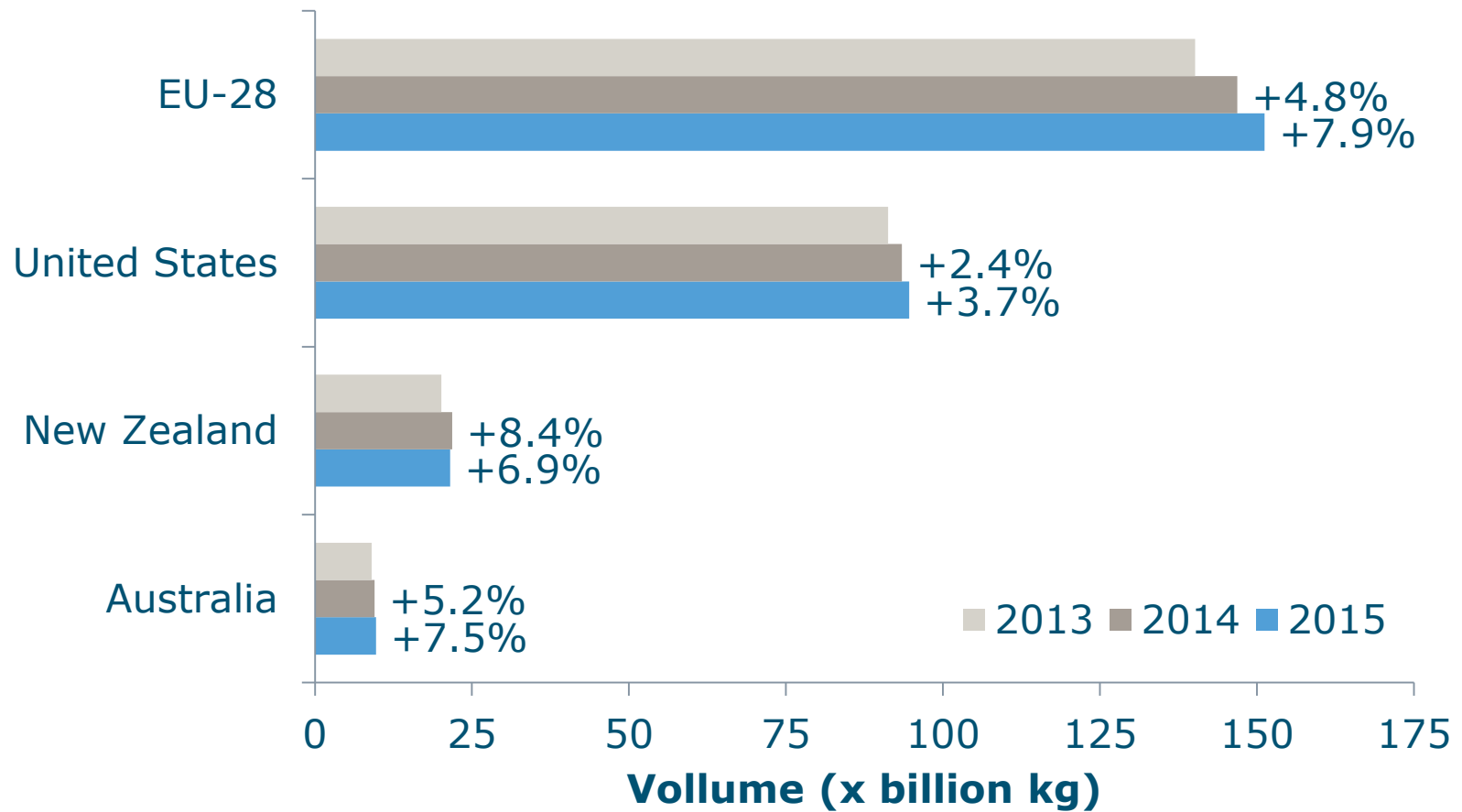
- Trends in characteristics: changes since April 2015
- New manure policy in the Netherlands: Dairy Act

Next: Corina van Middelaar

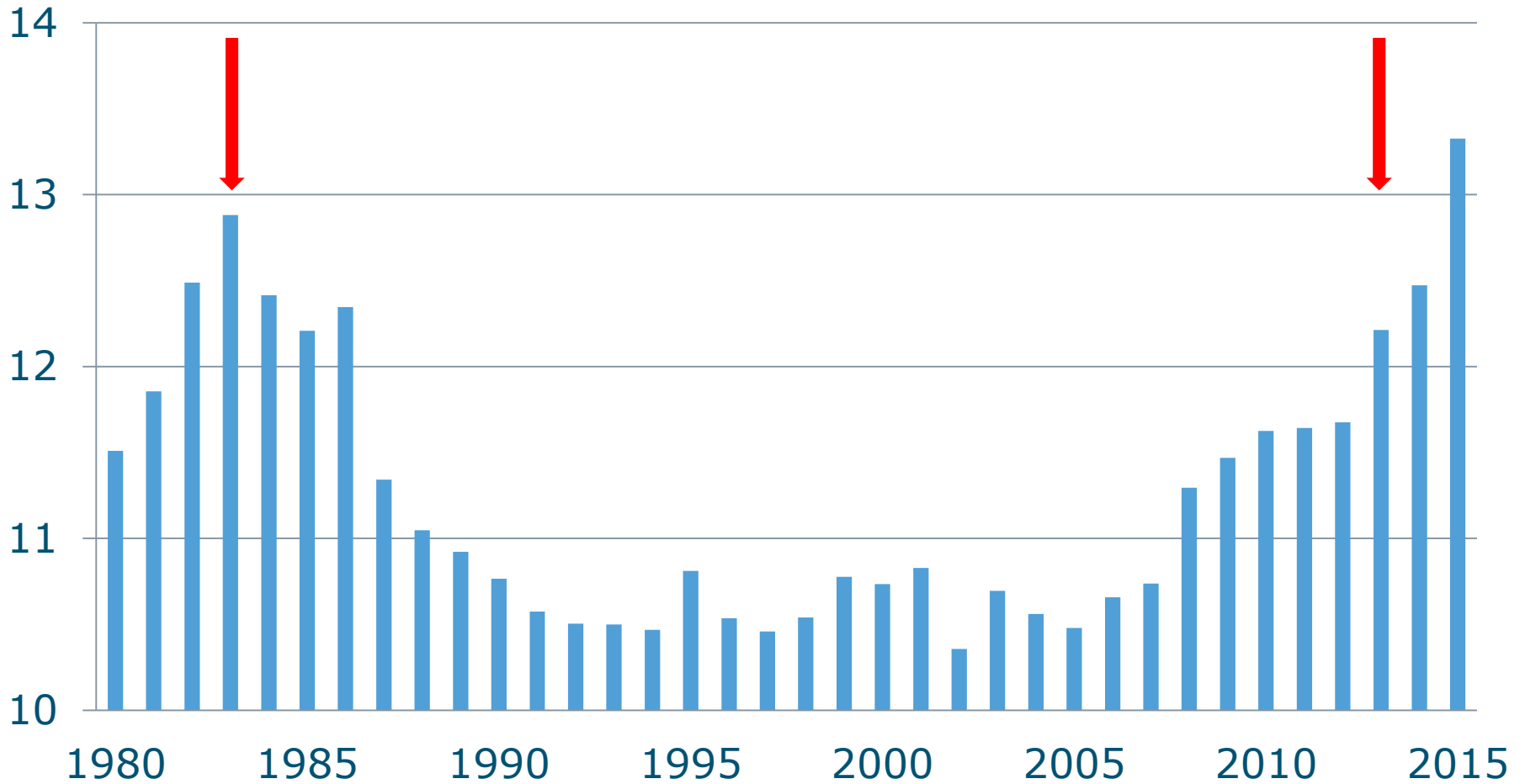
- Economic and environmental consequences of this new manure policy for dairy farmers

# Trends in international milk deliveries

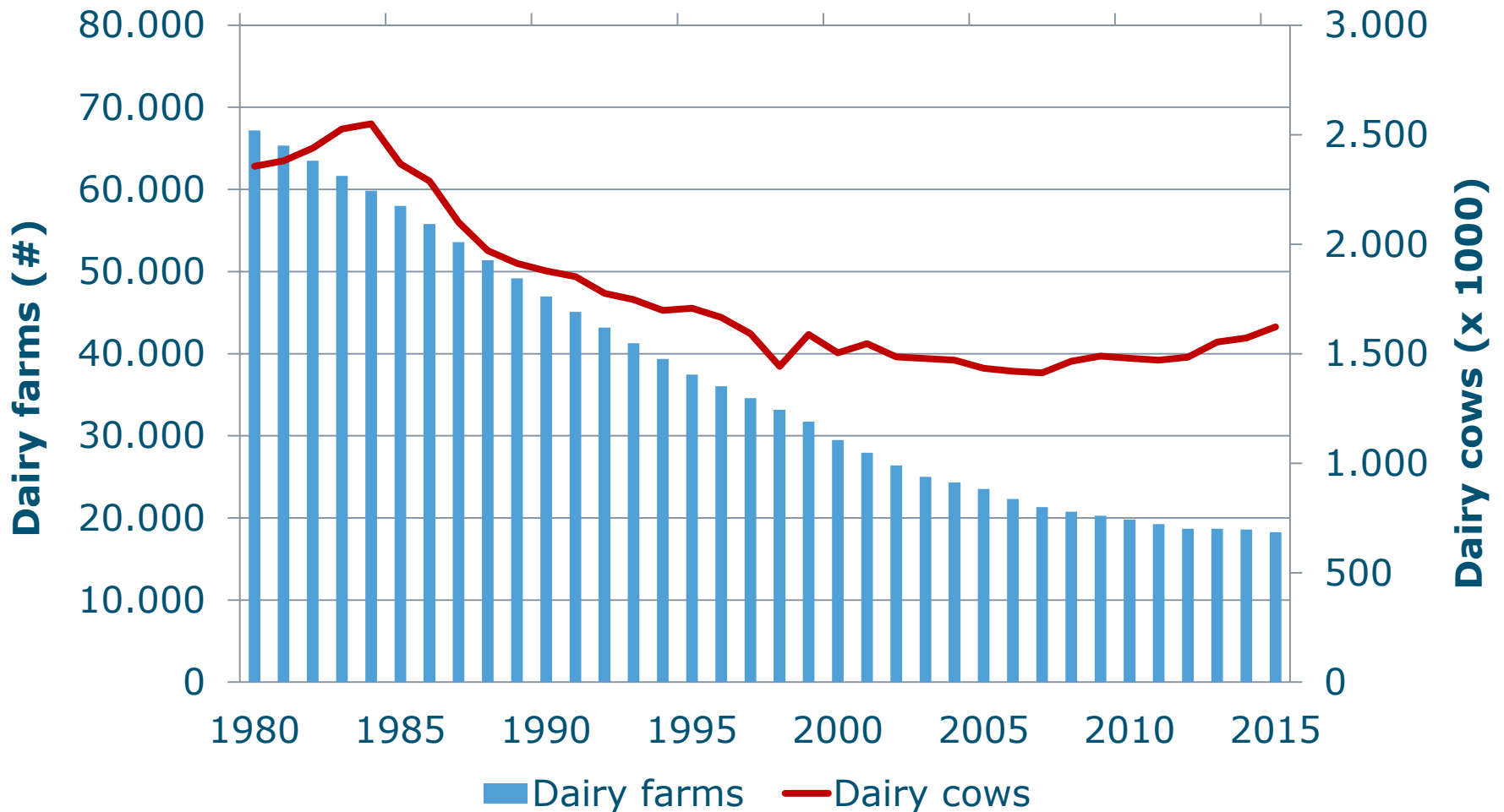
% change relative to 2013



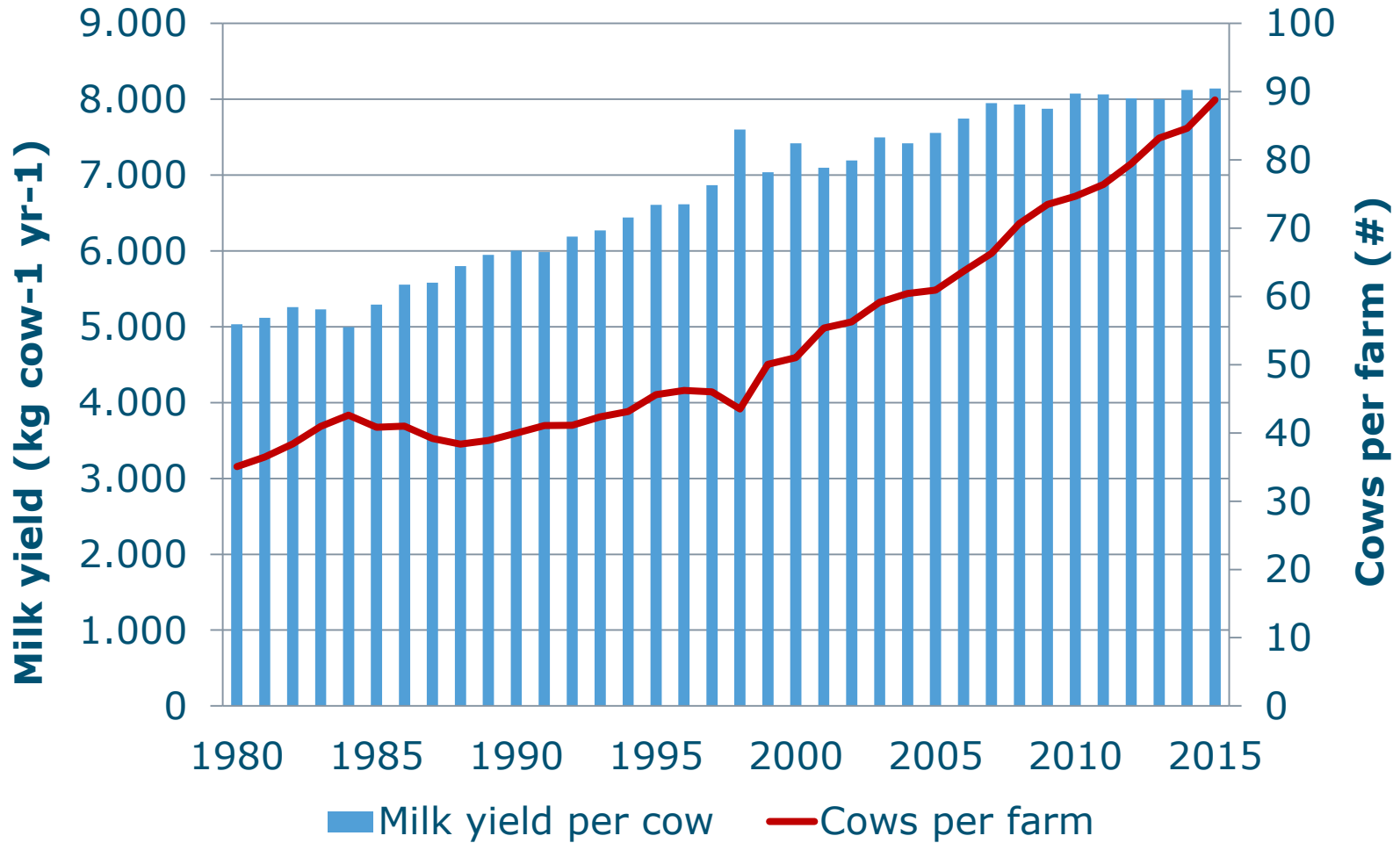
# Trends in Dutch milk deliveries (billion kg)



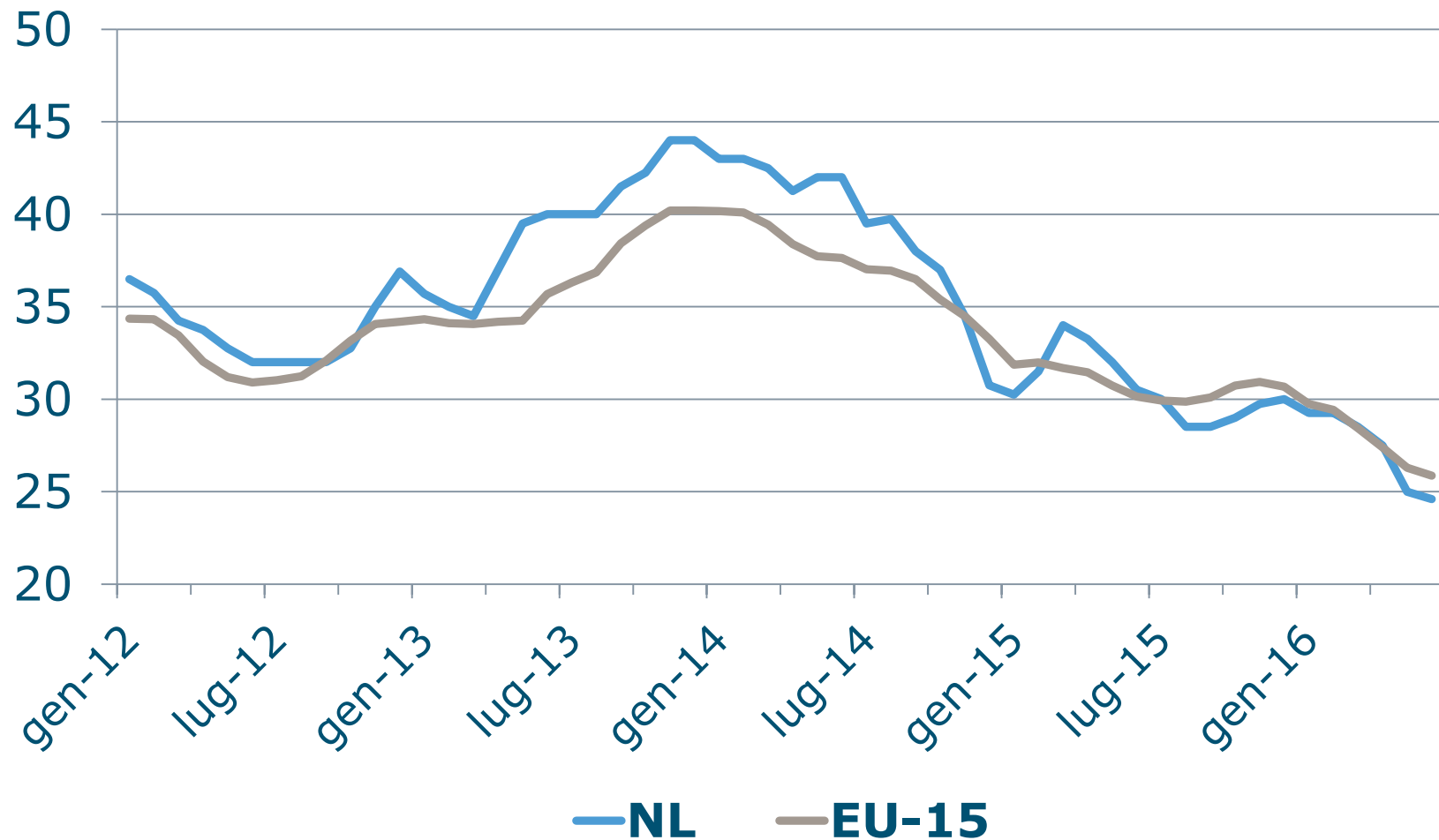
# No. dairy farms and cows (x 1000) in NL



# # dairy cows/farm and yield/cow

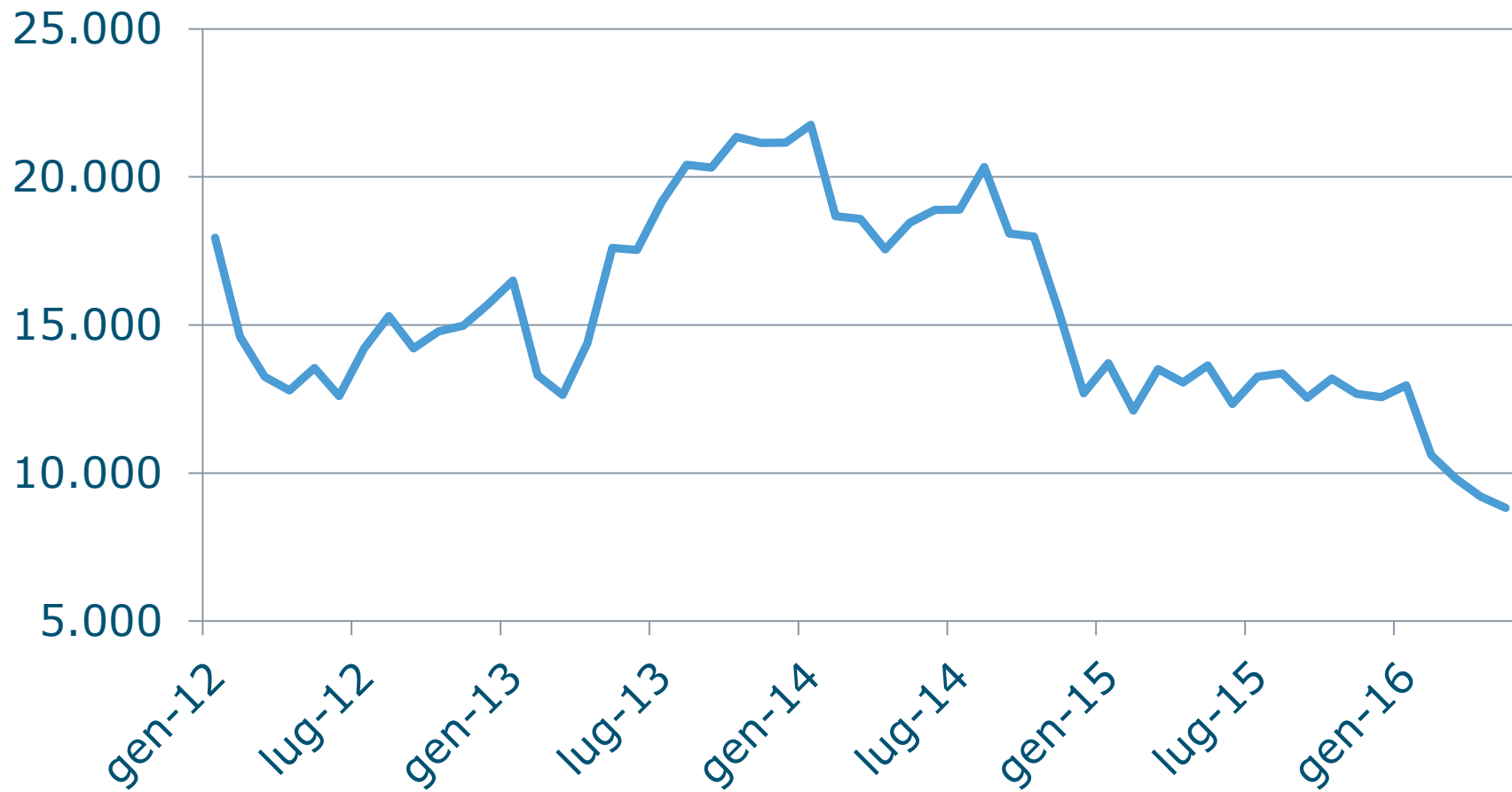


# Milk price (€/100 kg milk)



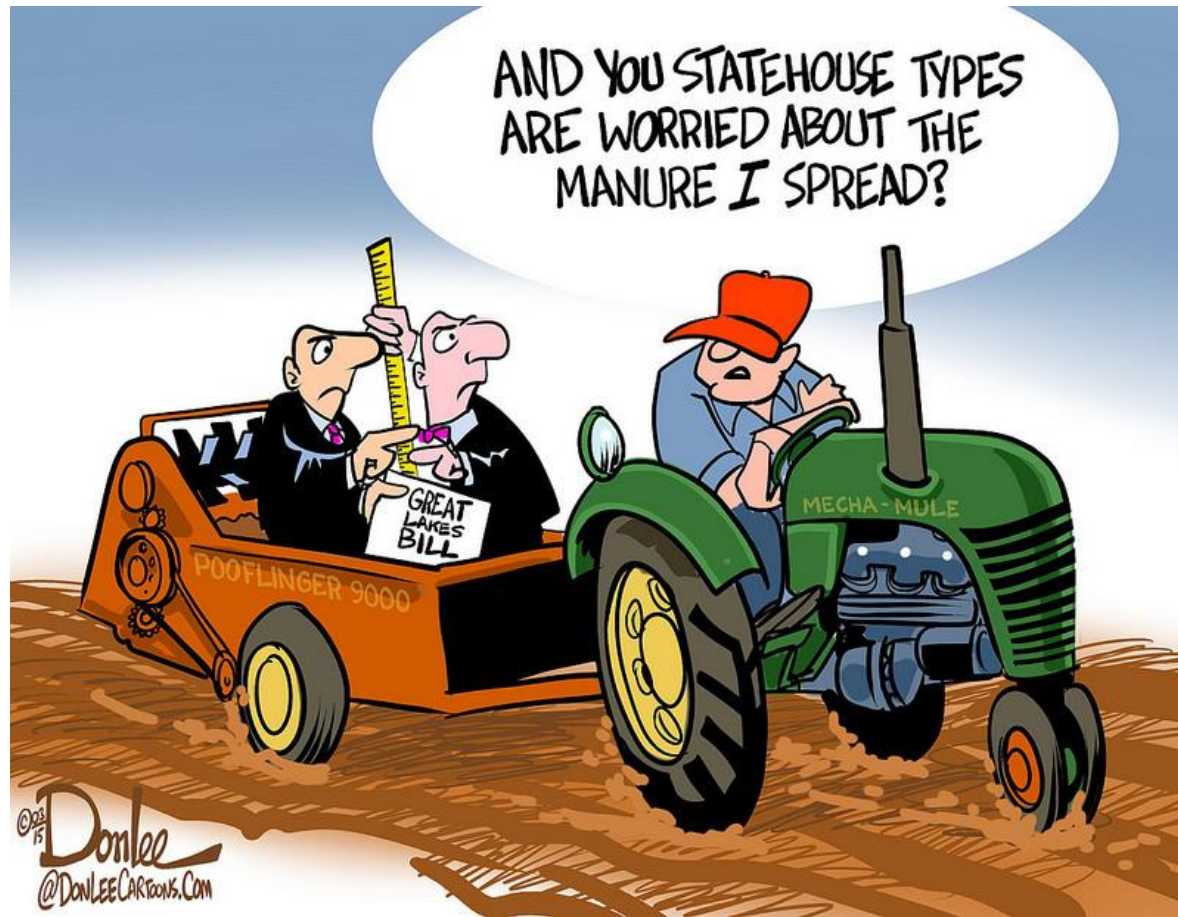
# Gross margin of a standardized farm

(Euro/month/farm)





More milk ..... also implies more manure

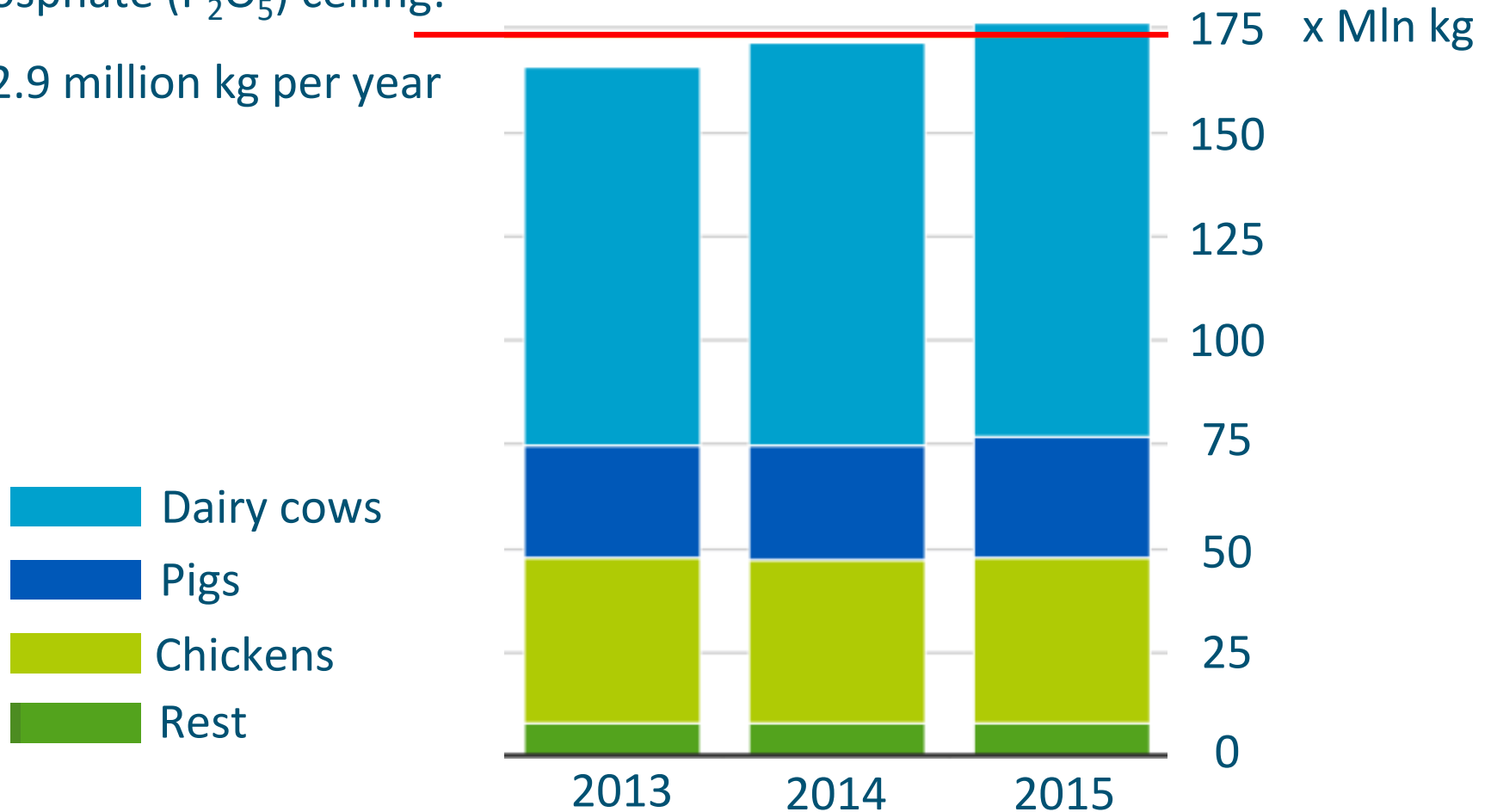


NL has phosphate ceiling of 172.9 million kg per year  
for entire livestock sector

# Dutch phosphate production

Phosphate ( $P_2O_5$ ) ceiling:

172.9 million kg per year



# 2015: A new manure policy “Dairy Act” – 3 parts

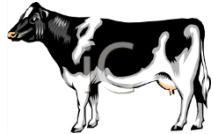
From milk quota...

to phosphate quota

To limit an increase in  $P_2O_5$  production



# On-farm phosphate surplus in 2013



89 dairy cows x 42 kg P<sub>2</sub>O<sub>5</sub>/yr = 3738 kg

37 < 1 yr x 9.6 kg P<sub>2</sub>O<sub>5</sub>/yr = 355 kg

37 > 1 yr x 21.9 kg P<sub>2</sub>O<sub>5</sub>/yr = 810 kg

---

4904 kg P<sub>2</sub>O<sub>5</sub>

## Application room



40 ha x 90 kg P<sub>2</sub>O<sub>5</sub>/ha = 3600 kg



10 ha x 60 kg P<sub>2</sub>O<sub>5</sub>/ha = 600 kg

---

4200 kg P<sub>2</sub>O<sub>5</sub>

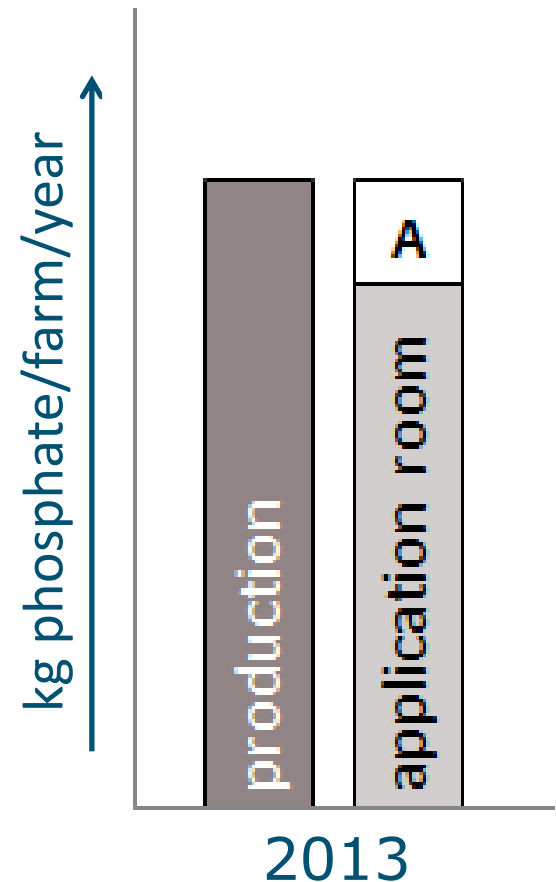
Surplus **A** = 4904 - 4200 = 704 kg P<sub>2</sub>O<sub>5</sub>

# Manure surplus: before Dairy Act

Since 1-1-2014: Partly processed  
Partly disposed

Region-specific processing %

- South 50%
- East 30%
- Rest 10%

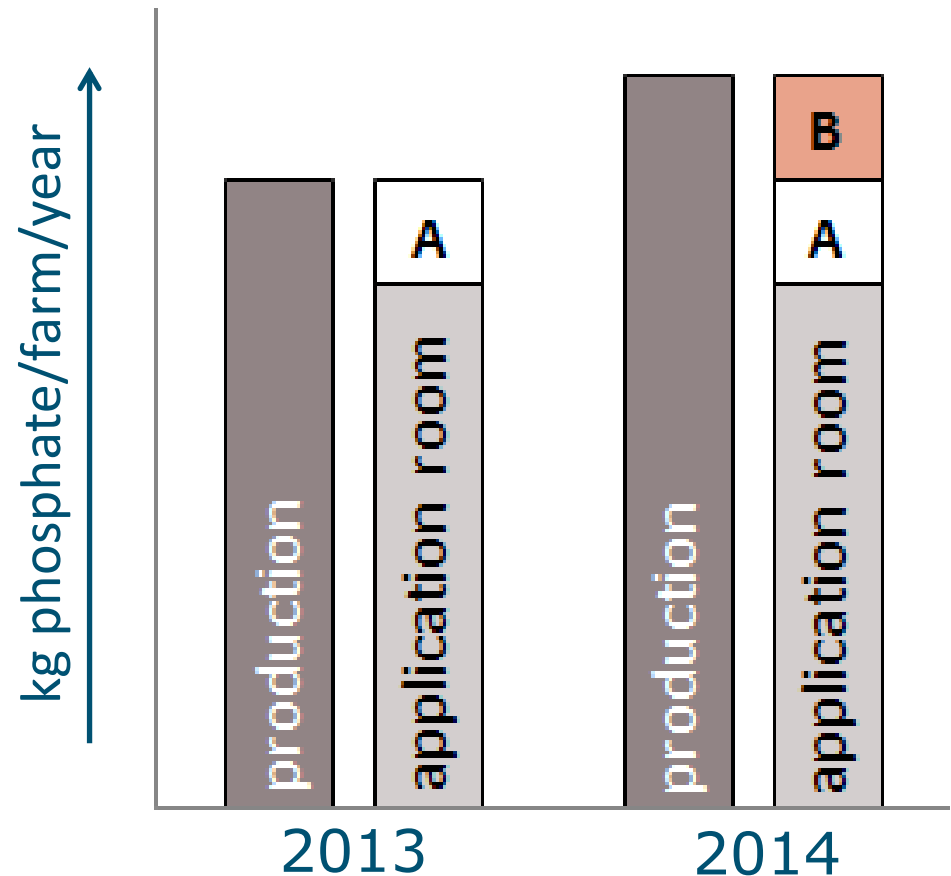


Example farm increased manure production in 2014

# Manure surplus: Dairy Act - 1

Since 1-1-2015

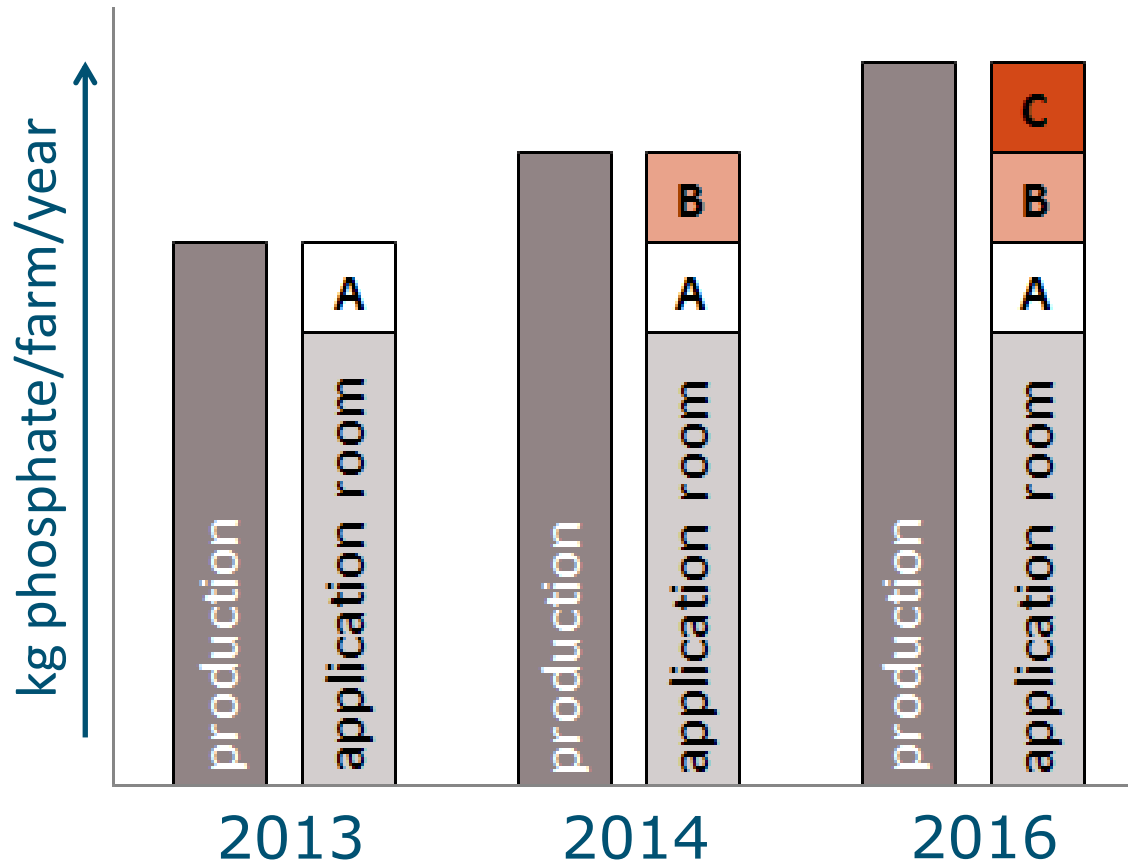
- Surplus A (2013) → 'reference surplus'
- Surplus B: surplus on top of surplus A: 100 processing



# Manure surplus: Dairy Act - 2

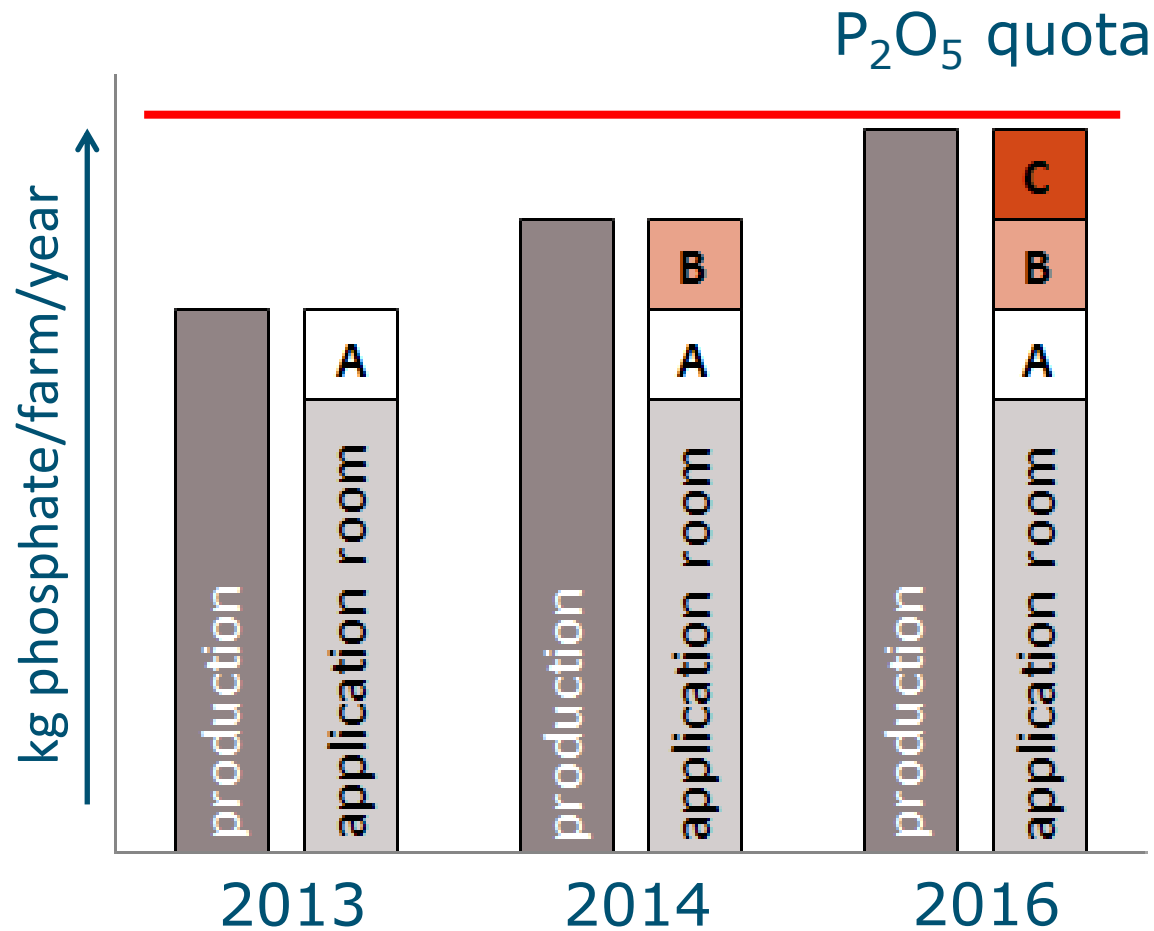
Since 1-1-2016

Additional production after 2014: processed & buy/hire land



# Manure surplus: Dairy Act - 3

Since 1-1-2016





# Dutch farmers

- Economic challenges
  - Milk price: reduction costs or added value?
  - Price volatility: risk management
- Environmental challenges: “Dairy Act”
  - Manure processing & P<sub>2</sub>O<sub>5</sub> quota
  - Other agreements “climate-neutral growth”?
- Societal challenges
  - Maintain grazing
  - Reduce antibiotic use



# Thank you for your attention



**WAGENINGEN UR**  
*For quality of life*

# Extra land purchases

Total phosphate surplus (A+B+C):

< 20 kg/ha: -

20-50 kg/ha: 25% surplus C

> 50 kg/ha: 50% surplus C

